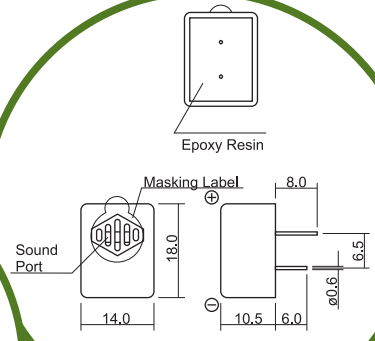
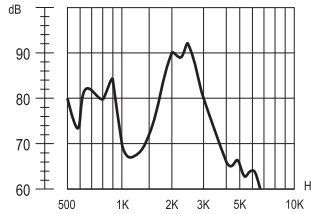


# SoniCrest Electro-Magnetic Sound Generators

## HCM18 Series



**Dimension**  
Unit: mm  
Tolerance : 0,3mm

### Frequency Response

Applied Voltage : 6V, 50% Duty Square Wave  
Measuring Distance : 10cm

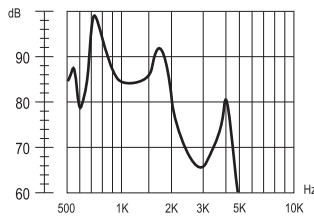
**Specification** (all data taken at 25°C unless otherwise specified)

Model	Rated Voltage (V)	Operating Voltage (V)	★Rated Current (mA)	Coil Resistance (Ω)	⊕Coil Impedance (Ω)	★Sound Output at 10cm (dB)	Rated Frequency (Hz)	Operating Temperature (°C)	Storage Temperature (°C)	Housing Material	Weight (g)
HCM1801	1.5	1 ~ 2	≤50	14 ± 9	22	≥80	2000	-25 ~ +70	-30 ~ +80	Noryl	4
HCM1806	6	3 ~ 10	≤50	60 ± 9	90	≥85	~	-30 ~ +85	-40 ~ +85	SE1-GFN2	4
HCM1812	12	6 ~ 15	≤50	120 ± 18	170	≥85	2500	-30 ~ +85	-40 ~ +85		4

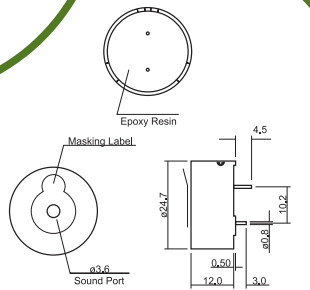
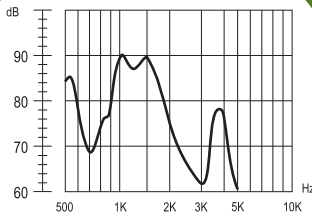
★ Value Applying Rated Voltage, Rated Frequency, 50% Duty Square Wave

⊕ Value Applying Rated Frequency, Sine Wave, Measuring Current 60μA

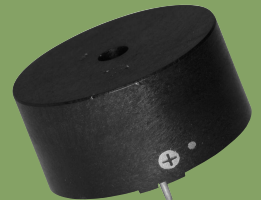
## HCM25A Series



## HCM25B Series



## HCM25A,B Series



### Frequency Response

Applied Voltage : 6V, 50% Duty Square Wave  
Measuring Distance : 10cm

### Dimension

Unit: mm  
Tolerance : 0.3mm

**Specification** (all data taken at 25°C unless otherwise specified)

Model	Rated Voltage (V)	Operating Voltage (V)	★Rated Current (mA)	Coil Resistance (Ω)	⊕Coil Impedance (Ω)	★Sound Output at 10cm (dB)	Rated Frequency (Hz)	Operating Temperature (°C)	Storage Temperature (°C)	Housing Material	Weight (g)
HCM2506A	6	3 ~ 7	≤100	27 ± 3	38	≥85	730	-20 ~ +70	-30 ~ +85	Noryl	10
HCM2506B	6	3 ~ 7	≤75	36 ± 5	48	≥85	1000 ~ 1500	-20 ~ +70	-30 ~ +85	SE1-GFN2	10
HCM2512B	12	8 ~ 14	≤55	120 ± 12	155	≥85	1000 ~ 1500	-20 ~ +70	-30 ~ +85		10

★ Value Applying Rated Voltage, Rated Frequency, 50% Duty Square Wave

⊕ Value Applying Rated Frequency, Sine Wave, Measuring Current 60μA